



El.En. SpA  
via Baldanzese, 17  
50041 Calenzano  
Firenze - Italy  
tel.: (+39) 055.88.26.807  
fax.: (+39) 055.88.32.884



## COMPANY PROFILE

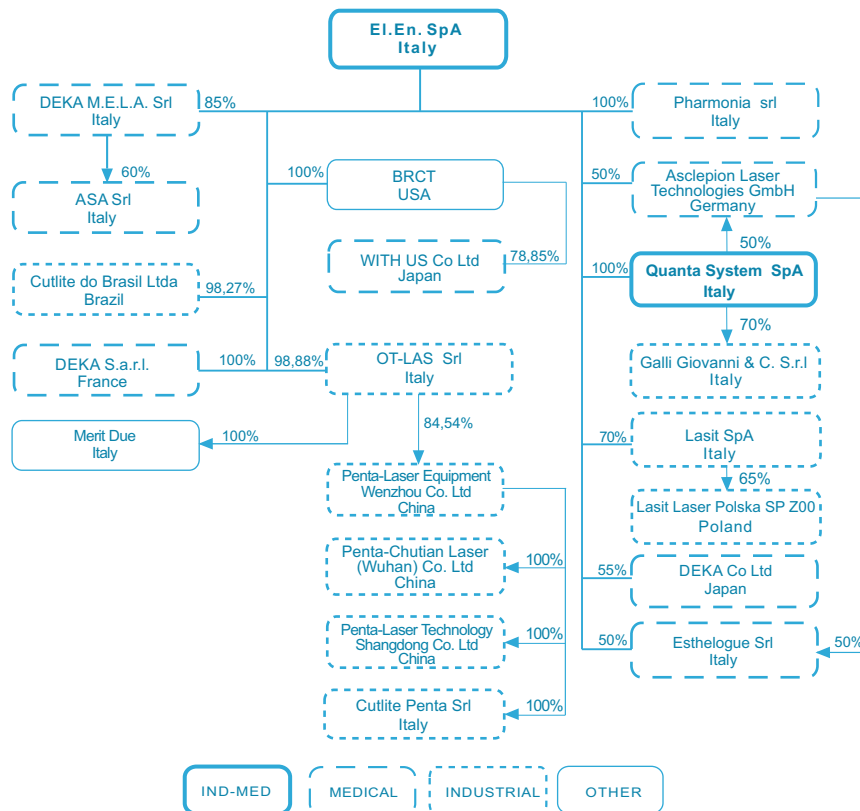
El.En. S.p.A. is an Italian hi-tech industrial group operating in opto-electronics with proprietary technologies and know-how developed over 40 years of experience. We are an international group counting more than 20 companies active worldwide in several market segments involving laser technologies applications.

Since its foundation El.En. constantly increased its turnover, leveraging and expanding its global presence. We benefit of a worldwide distribution network, count over 1.300 employees and more than 35,000 installed laser sources.

We design, manufacture and sell on a global basis:

- **medical laser devices** used in dermatology, surgery, aesthetics, physiotherapy, dentistry, urology and gynecology;
- **industrial laser systems** for applications ranging from cutting, marking and welding of metals, wood, plastic and glass to the decoration of leather, paper, cardboard and fabrics;
- **laser systems** for the **conservation** of the cultural heritage.

## GROUP STRUCTURE

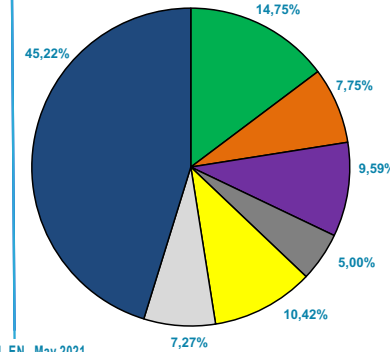


Source: El.En. June 2021

## SHAREHOLDERS

### BOARD MEMBERS OWNERSHIP

- Andrea Cangioli**  
11.768.752 shares
- Gabriele Clementi**  
7.646.488 shares
- Barbara Bazzocchi**  
3.989.984 shares
- Alberto Pecci**  
8.313.824 shares
- Michele Legnaioli**  
2560 shares



Source: EL.EN. May 2021

## CORPORATE GOVERNANCE

### BOARD OF DIRECTORS

- Chairman**  
Gabriele Clementi
- Managing Directors**  
Andrea Cangioli  
Barbara Bazzocchi
- Board Members**  
Daniela Toccafondi (Independent)  
Fabia Romagnoli (Independent)  
Michele Legnaioli (Independent)  
Alberto Pecci (Not Executive)

### INTERNAL CONTROL COMMITTEE

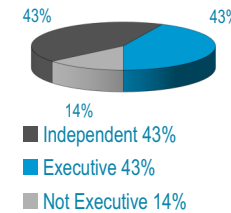
- Fabia Romagnoli
- Michele Legnaioli
- Alberto Pecci

### GENERAL MANAGER

Paolo Salvadeo

### STATUTORY AUDITORS

- President**  
Vincenzo Pilla
- Permanent Auditors**  
Paolo Caselli  
Rita Pelagotti



### CODE OF

### CONDUCT ON INSIDER DEALING

The directors and others relevant persons must report all transactions completed with a value equal to Euro 20.000 or more within any given calendar year.

### AUDITING COMPANY

ERNST & YOUNG

### SPECIALIST BROKER

INTERMONTE SIM S.p.A.

### INVESTOR RELATIONS MANAGER

ENRICO ROMAGNOLI  
TEL: (+39) 055-8826807  
FAX: (+39) 055-8832884  
finance@elen.it

### INVESTOR RELATIONS

POLYTEMS | HIR

Rome - Tel: (+39) 06 69923324  
E-mail: polytemshir@polytemshir.it

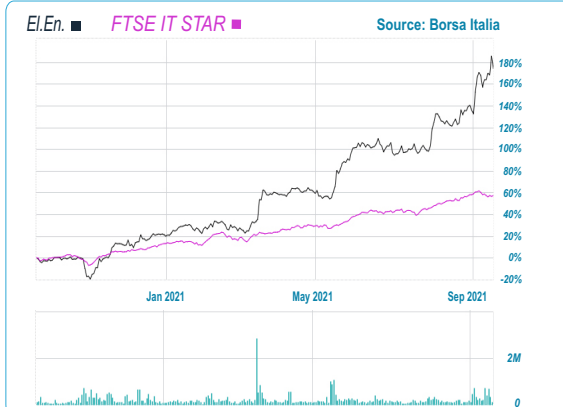


## STOCK INFORMATION

### Company: EL.EN.SPA

Market	Borsa MTAX	Share capital	2.592.380,18	Sector	Electronic & Electrical Equipment
Segment	STAR	NO. SHARES		Sub-Sector	Electronic Equipment
Code	ISIN - IT0005453250	of which: -Ordinary shares	79.765.544	Dividend Paid	€ 0,40
	Ticker - ELN	-Preferred shares	0000000	Ex-dividend date	24/05/2021
Reuters	ELN.MI	Capitalization (16/09/2021)	1.229 mil euro		
Bloomberg	ELN.IM	Minimum amount traded	1		
		Date of quotation	11/12/2000		
		IPO	29,9 mil euro		

### STOCK PERFORMANCE



Last price (16/09/2021) 15,40

Range(-1 Y): max 15,82 (15/09/21)  
min 4,45 (29/10/20)

#### Stock performance

-1 Y	+ 175,21%
-6 M	+ 79,29%
-1 M	+ 24,51%

#### FTSE IT STAR Index performance

-1 Y	+ 57,23%
-6 M	+ 27,94%
-1 M	+ 3,73%

## STATISTICS AND INDICES

YoY (Sep 16, 2020 - Sep 15, 2021) MoM (Aug 16, 2020 - Sep 15, 2021)

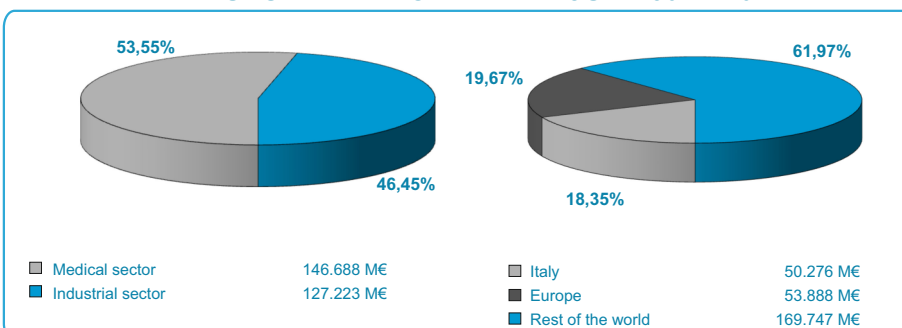
CTV		
Total	461.044 K€	84.298 K€
Daily average	1.815 K€	3.665 K€
N. shares traded (split adjusted)		
Total	54.013 K	5.907 K
Daily average	213 K	257 K

### COMPARABLES

Sisram Medical	Han's Laser
Lutronic	IPG
Cutera	Prima Industrie
InMode	Venus
Bystronic	

Source: El.En. S.p.A.

## REVENUES BREAKDOWN AT AT JUNE 30TH 2021



## KEY FIGURES

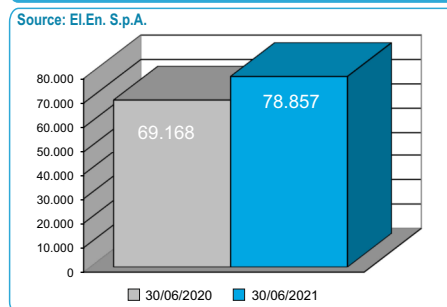
### CONSOLIDATED INCOME STATEMENT

	30/06/2021	Inc %	30/06/2020	Inc %	Var. %
Revenues	273.911	100,0%	162.521	100,0%	68,54%
Change in inventory of finished goods and WIP	12.745	4,7%	11.417	7,0%	11,64%
Other revenues and income	2.162	0,8%	1.971	1,2%	9,73%
<b>Value of production</b>	<b>288.819</b>	<b>105,4%</b>	<b>175.909</b>	<b>108,2%</b>	<b>64,19%</b>
Purchase of raw materials	184.890	67,5%	107.324	66,0%	72,27%
Change in inventory of raw material	-16.934	-6,2%	-4.579	-2,8%	269,82%
Other direct services	20.948	7,6%	13.287	8,2%	57,65%
<b>Gross margin</b>	<b>99.915</b>	<b>36,5%</b>	<b>59.877</b>	<b>36,8%</b>	<b>66,87%</b>
Other operating services and charges	20.763	7,6%	16.058	9,9%	29,30%
<b>Added value</b>	<b>79.153</b>	<b>28,9%</b>	<b>43.820</b>	<b>27,0%</b>	<b>80,63%</b>
Staff cost	40.015	14,6%	29.334	18,0%	36,41%
<b>EBITDA</b>	<b>39.138</b>	<b>14,3%</b>	<b>14.485</b>	<b>8,9%</b>	<b>170,19%</b>
Depreciation, amortization and other accruals	8.280	3,0%	5.197	3,2%	59,33%
<b>EBIT</b>	<b>30.857</b>	<b>11,3%</b>	<b>9.288</b>	<b>5,7%</b>	<b>232,22%</b>
Net financial income (charges)	1.088	0,4%	-219	-0,1%	
Share of profit of associated companies	-111	0,0%	-126	-0,1%	-12,13%
<b>Income (loss) before taxes</b>	<b>31.835</b>	<b>11,6%</b>	<b>8.943</b>	<b>5,5%</b>	<b>256,00%</b>
Income taxes	6.928	2,5%	2.139	1,3%	223,93%
<b>Income (loss) for the financial period</b>	<b>24.907</b>	<b>9,1%</b>	<b>6.804</b>	<b>4,2%</b>	<b>266,07%</b>
Net profit (loss) of minority interest	2.457	0,9%	403	0,2%	509,75%
<b>Net income (loss)</b>	<b>22.451</b>	<b>8,2%</b>	<b>6.401</b>	<b>3,9%</b>	<b>250,74%</b>

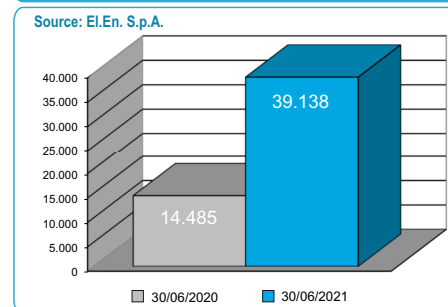
### NET FINANCIAL POSITION

	30/06/2021	31/12/2020
Cash and cash equivalents	139.239	123.744
Short term financial receivables	2	14
Financial short term liabilities	-23.977	(23.827)
<b>Net current financial position</b>	<b>115.264</b>	<b>99.931</b>
Financial long term liabilities	-36.407	(35.763)
<b>Net financial position</b>	<b>78.857</b>	<b>69.168</b>

### NET FINANCIAL POSITION



### EBITDA



Note: The information shown are organized in conformity with the international accounting principles, IAS/IFRS. All amounts are expressed in thousands of Euro, unless otherwise stated. Data as of June 30th are subject to a limited review.